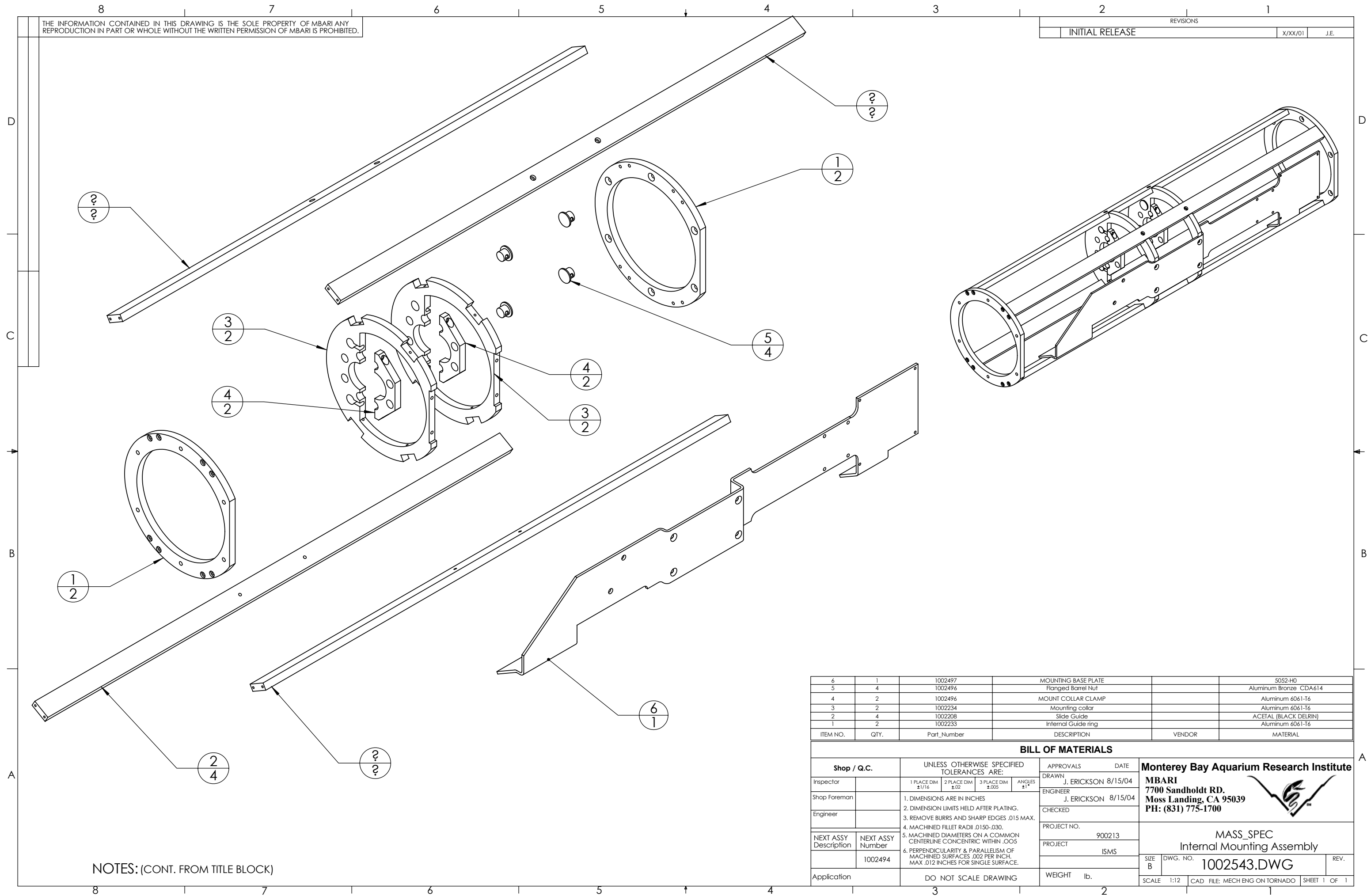



THE INFORMATION CONTAINED IN THIS DRAWING IS THE SOLE PROPERTY OF MBARI ANY REPRODUCTION IN PART OR WHOLE WITHOUT THE WRITTEN PERMISSION OF MBARI IS PROHIBITED.

|                 |  |           |         |      |
|-----------------|--|-----------|---------|------|
| INITIAL RELEASE |  | REVISIONS | X/XX/01 | J.E. |
|-----------------|--|-----------|---------|------|



| ITEM NO. | QTY. | Part_Number | DESCRIPTION         | VENDOR | MATERIAL               |
|----------|------|-------------|---------------------|--------|------------------------|
| 6        | 1    | 1002497     | MOUNTING BASE PLATE |        | 5052-H0                |
| 5        | 4    | 1002496     | Flanged Barrel Nut  |        | Aluminum Bronze CDA614 |
| 4        | 2    | 1002496     | MOUNT COLLAR CLAMP  |        | Aluminum 6061-T6       |
| 3        | 2    | 1002234     | Mounting collar     |        | Aluminum 6061-T6       |
| 2        | 4    | 1002208     | Slide Guide         |        | ACETAL (BLACK DELRIN)  |
| 1        | 2    | 1002233     | Internal Guide ring |        | Aluminum 6061-T6       |

**BILL OF MATERIALS**

|                       |                      |   |                  |             |         |  |
|-----------------------|----------------------|---|------------------|-------------|---------|--|
| Shop / Q.C.           |                      | UNLESS OTHERWISE SPECIFIED TOLERANCES ARE:  |                  | APPROVALS   | DATE    | <b>Monterey Bay Aquarium Research Institute</b><br><b>MBARI</b><br><b>7700 Sandholdt RD.</b><br><b>Moss Landing, CA 95039</b><br><b>PH: (831) 775-1700</b>  |
| Inspector             |                      | 1 PLACE DIM ±1/16   | 2 PLACE DIM ±.02 | J. ERICKSON | 8/15/04 |  |
| Shop Foreman          |                      | 3 PLACE DIM ±.005   | ANGLES ±1°       | J. ERICKSON | 8/15/04 |  |
| Engineer              |                      | 1. DIMENSIONS ARE IN INCHES<br>2. DIMENSION LIMITS HELD AFTER PLATING.<br>3. REMOVE BURRS AND SHARP EDGES .015 MAX.<br>4. MACHINED FILLET RADII .0150-.030.<br>5. MACHINED DIAMETERS ON A COMMON CENTERLINE CONCENTRIC WITHIN .005<br>6. PERPENDICULARITY & PARALLELISM OF MACHINED SURFACES .002 PER INCH. MAX .012 INCHES FOR SINGLE SURFACE. |                  |             |         |  |
| NEXT ASSY Description | NEXT ASSY Number     |   |                  | PROJECT NO. | 900213  | MASS_SPEC<br>Internal Mounting Assembly  |
|                       | 1002494              |   |                  | PROJECT     | ISMS    |  |
| Application           | DO NOT SCALE DRAWING | WEIGHT  | lb.              | SCALE       | 1:12    | DWG. NO. <b>1002543.DWG</b><br>FILE: MECH ENG ON TORNADO<br>SHEET 1 OF 1   |

NOTES: (CONT. FROM TITLE BLOCK)